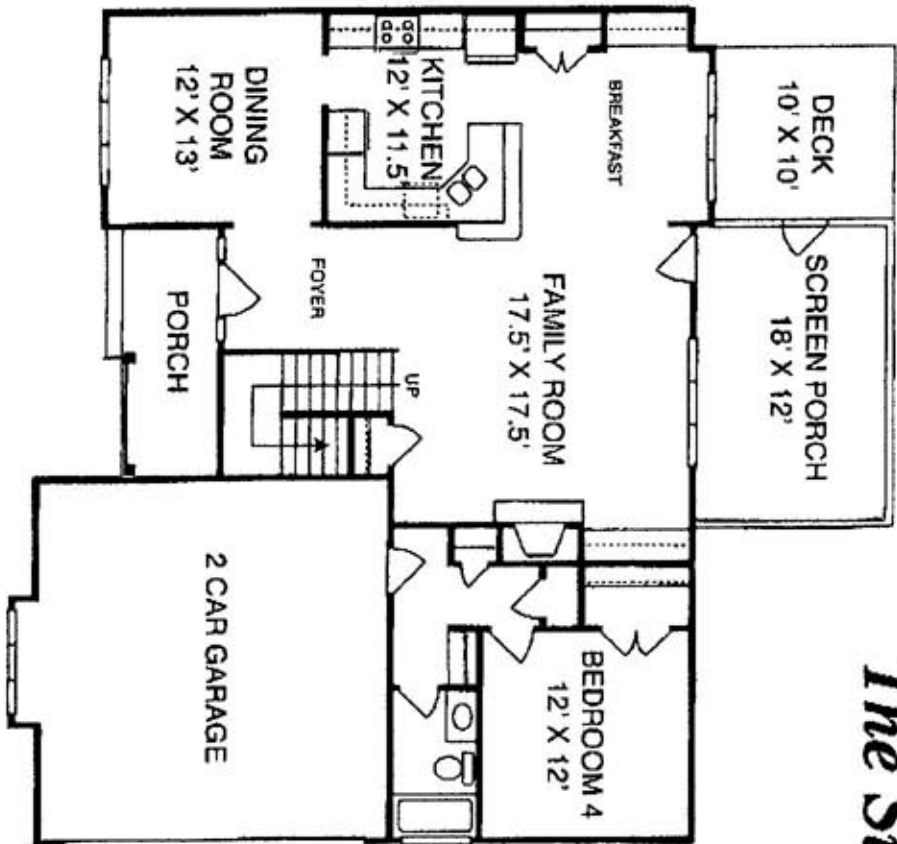
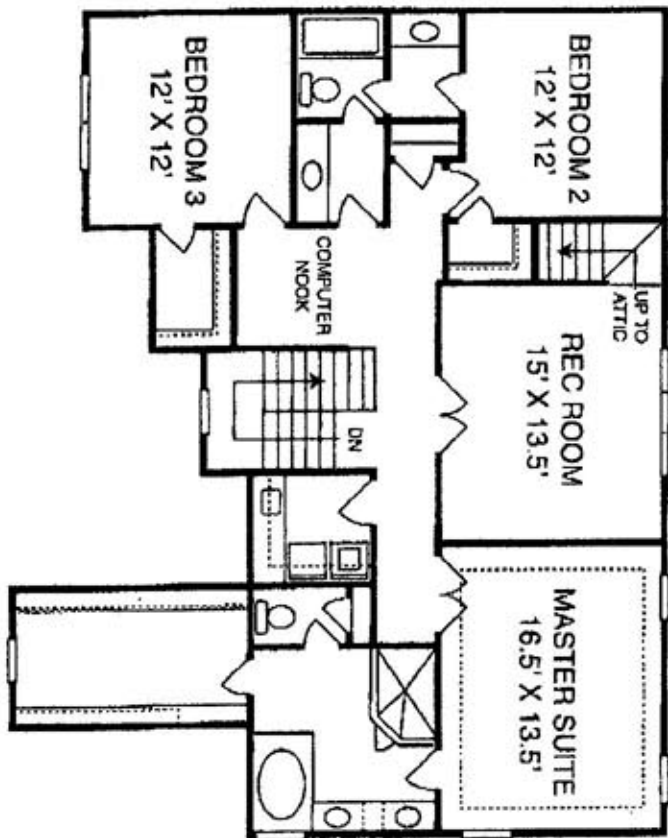


Braswell Construction Company

The Summerdale



FIRST FLOOR



SECOND FLOOR

VISIT OUR SALES CENTER OR CALL

453-2000

heritagewakeforest.com

Sales and marketing by Coldwell Banker Howard Perry and Walston Builder Services

This floor plan and elevation is representational of the home being built or to be built. It may vary due to changes made during the construction process or due to availability of materials. Room dimensions and square footage are approximate.

